

# SETTING THE NEW STANDARD.





# HOUSTON. WE HAVE A SOLUTION.

We all know that flames and stadium shots are the absolute essentials for a festival! These effects are massive and really make the audience go crazy. But we also know controlling these effects by DMX can be dangerous sometimes.

In fact, we've all seen situations where a DJ at a festival started to jump in front of stage and got hit by a flame. Or a camera guy who got hit by a Stadium shot. We all agree it is no discussion that safety is everyone's responsibility and should always come first right? The first problem is that DMX controllers are originally not designed to control sfx and safety can not be controlled by DMX. The second problem is that the sfx operator does not always have full sight on the sfx machines and the situation on stage. When an artist, a camera guy or anyone else steps in a danger zone, the operator might get the 'don't fire call' over the intercom too late. Well, that's all history now! We've got the solution!





# SURE AS HELL.

## SFX SAFETY ARM SYSTEM

The new safety arm controller makes it possible to arm and disarm high risk sfx machines. The system is designed based on the European machinery guidelines, so it is ready for the future! How it works? Quite simple!

By warning people when a dangerous situation can occur and by giving the sfx crew the opportunity to disable the sfx machines in unsafe situations. A system that is independent from data and kills the dangerous hardware like valves, ignitors etc. but keeps the system powered so all data (rdm) keeps working. Another big plus is when the machines are disarmed, crew can refill them safely.





# TAKE CHARGE.

## SFX SAFETY ARM CONTROLLER

Before you want to fire, switch on the key of the ARM CONTROLLER to arm the system. The LED on the arm controller will show if everything is okay and all sfx machines will be armed and ready to fire. Open the DMX enable channel 50% on your dmx desk and the FX LEDs will start to flash. After the sfx are fired the system can be disarmed and all machines will be deactivated and will turn in safe mode. The sfx safety arm controller is equipped with an e-stop. In case of a dangerous situation, hit the e-stop and all connected machines will be blocked and prevented from firing immediately. The operator will get feedback that an e-stop is hit.

### SPECIFICATIONS

<b>Product Code</b>	MFX3220
<b>Voltage</b>	100-250 Vac 50/60 Hz
<b>Power consumption</b>	50 W
<b>Control</b>	Manual
<b>Size (LxWxH)</b>	15 x 18 x 9,5 cm
<b>Weight</b>	1,55 kg



Key activated arm system



Status LED and reset button



2 Arm line outputs





# DROP IT TO STOP IT.

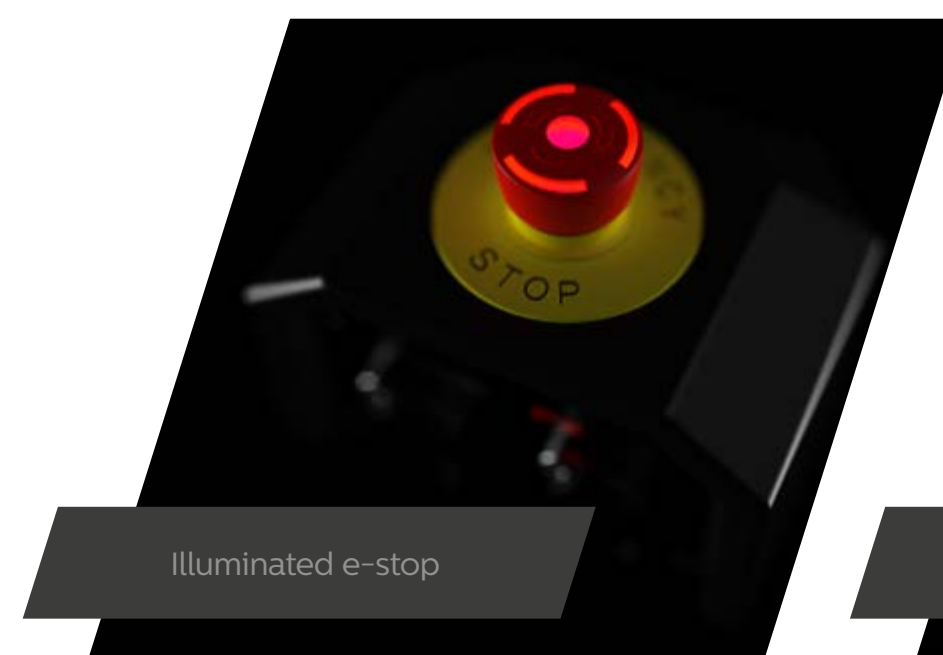
## SFX SAFETY E-STOP

The sfx safety arm controller can be extended with one or more inline e-stops to place next to the stage for a sfx safety manager. The e-stops are illuminated when the system is armed for clear indication. When the e-stop is hit, feedback will be sent back to the operator so he will see on the arm controller that there is an unsafe situation. The operator can also see when the situation is clear again and reset the system so the show can go on!



### SPECIFICATIONS

<b>Product Code</b>	MFX3222
<b>Size (LxWxH)</b>	11 x 13 x 11 cm
<b>Weight</b>	0,40 g
<b>Mounting options</b>	M10 insert for trussclamps, internal magnet to stick on any piece of metal, mounting rings for tyrap.



Illuminated e-stop



Robust and rainproof



Limitless mounting options





# SAFETY SIGNER.

## SFX SAFETY BEACON

The sfx safety beacon can be added in the same line and will start to flash when the sfx machines are armed. This will warn everyone on and around the stage that big effects are coming. Great to know what's coming but even more important, safety for artists, crew and crowd!



### SPECIFICATIONS

<b>Product Code</b>	MFX3221
<b>Size (LxWxH)</b>	11 x 13 x 8,5 cm
<b>Weight</b>	0,45 kg
<b>Mounting options</b>	M10 insert for trussclamps, internal magnet to stick on any piece of metal, mounting rings for tyrap.



Red warning led



Robust and rainproof



Limitless mounting options





# COMBINE THE LINE.

## SFX SAFETY COMBINER BOX

The combiner box combines DMX and the arm signal to run over one cable. It outputs a safety line that is interconnected with the master line. Multiple Combiners make it possible to create star networks of lines that are distributed from one or more central location(s). Possible to use it as a standalone booster of the arm signal.



### SPECIFICATIONS

<b>Product Code</b>	MFX3225
<b>Voltage</b>	100-250 Vac 50/60 Hz
<b>Power consumption</b>	50 W
<b>Size (LxWxH)</b>	15 x 13,5 x 13,5 cm
<b>Weight</b>	1,6 kg
<b>Mounting options</b>	M10 Insert Rainproof



Led status indicators



5pins dmx in and dmx + arm out (etherCON)



Robust and rainproof





# SPLIT THE SH\*T.

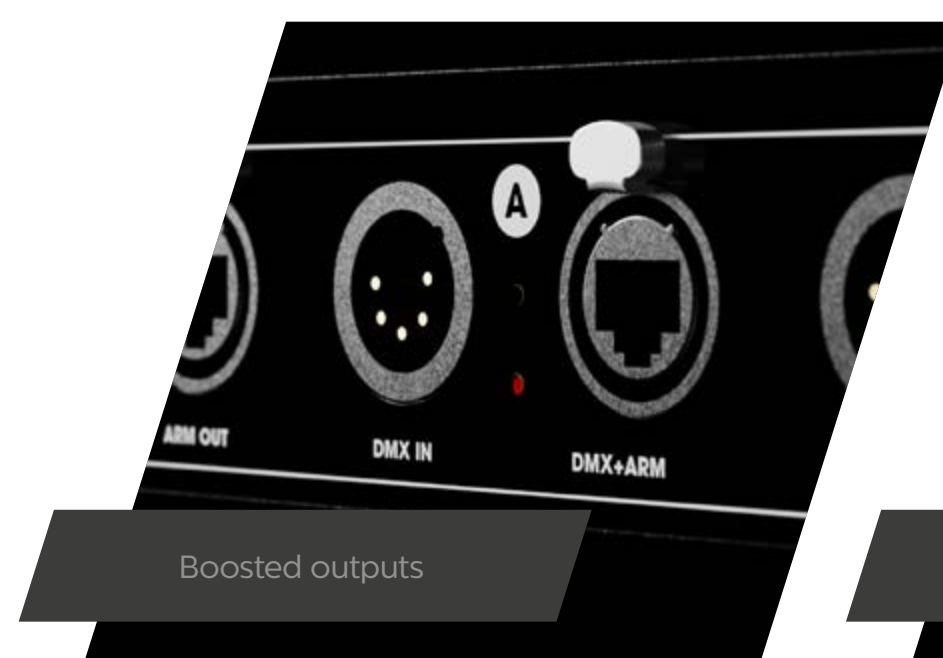
## SFX SAFETY COMBINER 19" RACK

The combiner rack is equipped with two arm inputs with both two dmx over arm output lines. This makes it possible to connect 2 arm controllers but also to link both groups to use just one arm controller for all four outputs.



### SPECIFICATIONS

Product Code	MFX3224
Voltage	100-250 Vac 50/60 Hz
Power consumption	120 W
Size (LxWxH)	24 cm x 19" x 1U
Weight	4,15 kg
Mounting options	M10 Insert



Boosted outputs



1x4 outputs / 2x2 outputs



Status LEDs



# LAST IN LINE.

## SFX SAFETY TERMINATOR

Terminating plug required at both ends of each line to form a loop in the E-stop circuit.



### SPECIFICATIONS

Product Code MFX3223

# ADDED VALUE.

## SFX SAFETY DMX INJECTOR

Special terminator with the possibility to inject the DMX signal into the arm controller.



### SPECIFICATIONS

Product Code MFX3226  
Cable length 25 cm

## SFX SAFETY LABEL

Indication labels to stick on the arm controller, inline e-stop and beacons to make clear which sfx are connected.



### SPECIFICATIONS

Product Code SFX3201  
Size Small 50 x 25 mm  
  
Product Code SFX3202  
Size Medium 75 x 50 mm



# THE SKY IS THE LIMIT.

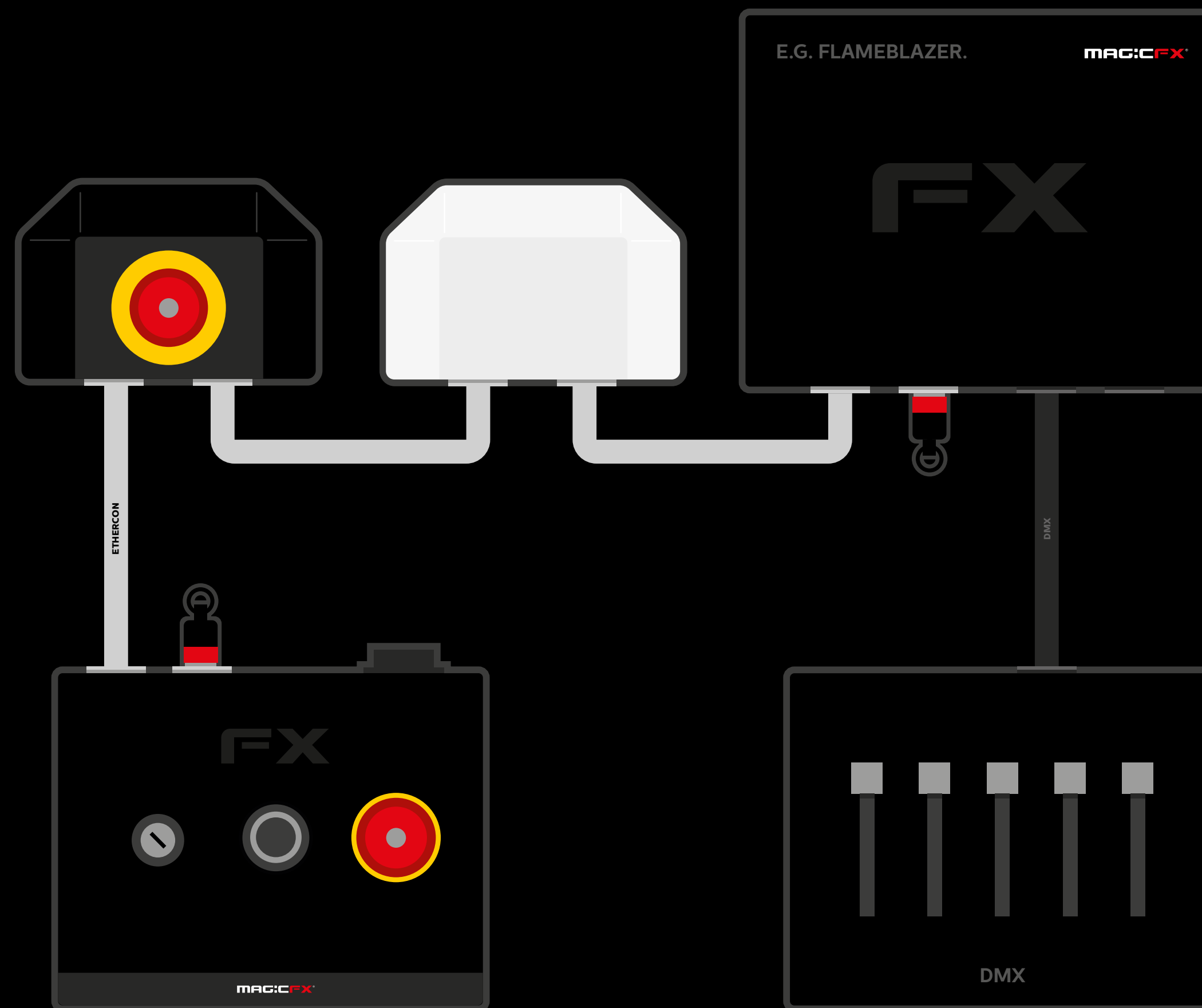
The ARM CONTROLLER can be connected directly to the dmx desk and only 1 cable can be used to connect to the sfx machines. It's also possible to connect dmx and arm cables separately. So the system is really flexible and can be used for small set ups and for the biggest festivals as well.



1.

# SETUP ONE.

DMX and ARM cables are separated. Useful when high risk sfx machines are combined with lower risk sfx machines in the same line. Or when preferred to place the ARM controller close to the sfx machines.

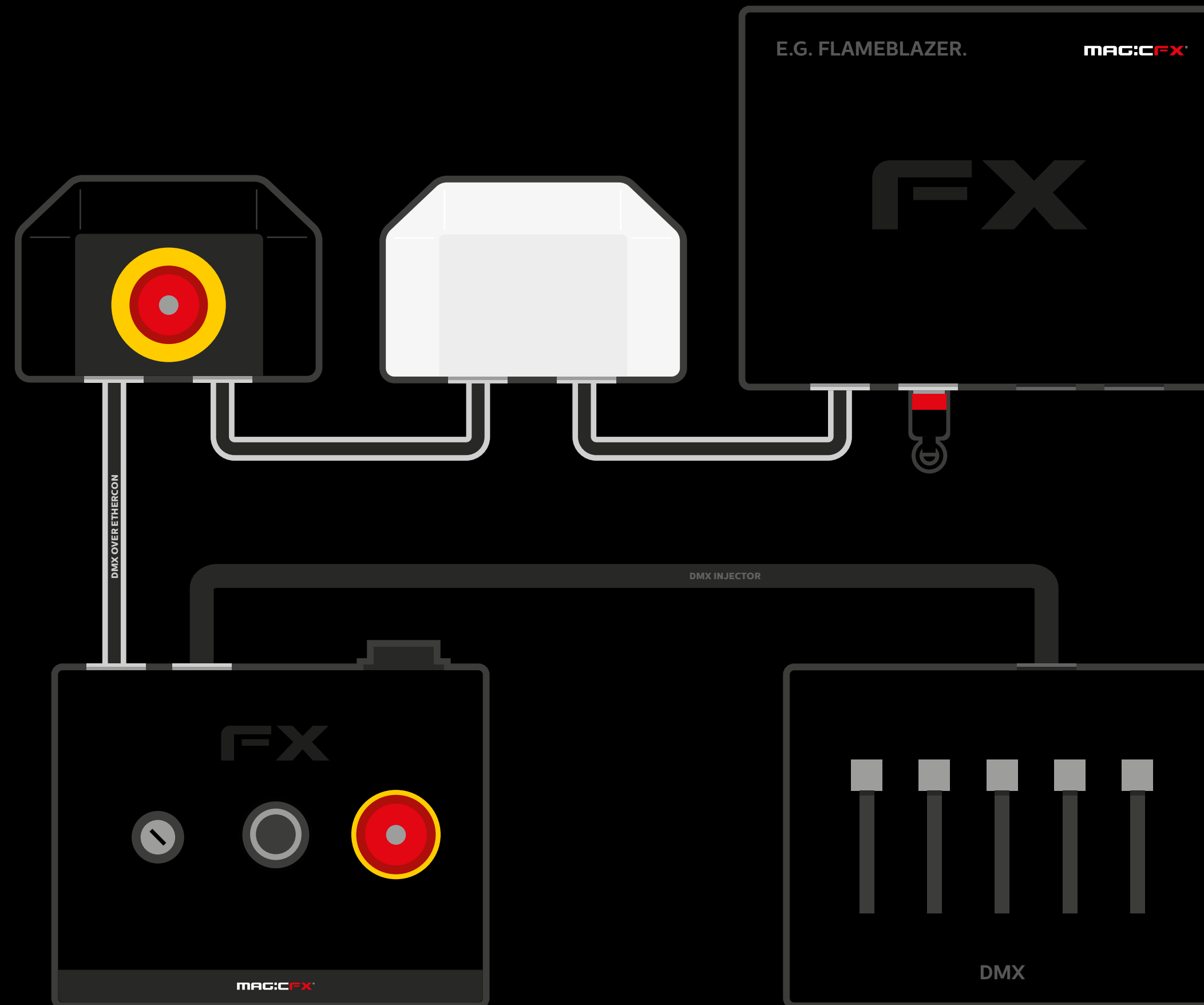




2.

# SETUP TWO.

Dmx is injected to the ARM CONTROLLER. From the ARM CONTROLLER dmx and arm signal are combined. Just one outgoing cable connects to all high risk sfx machines.

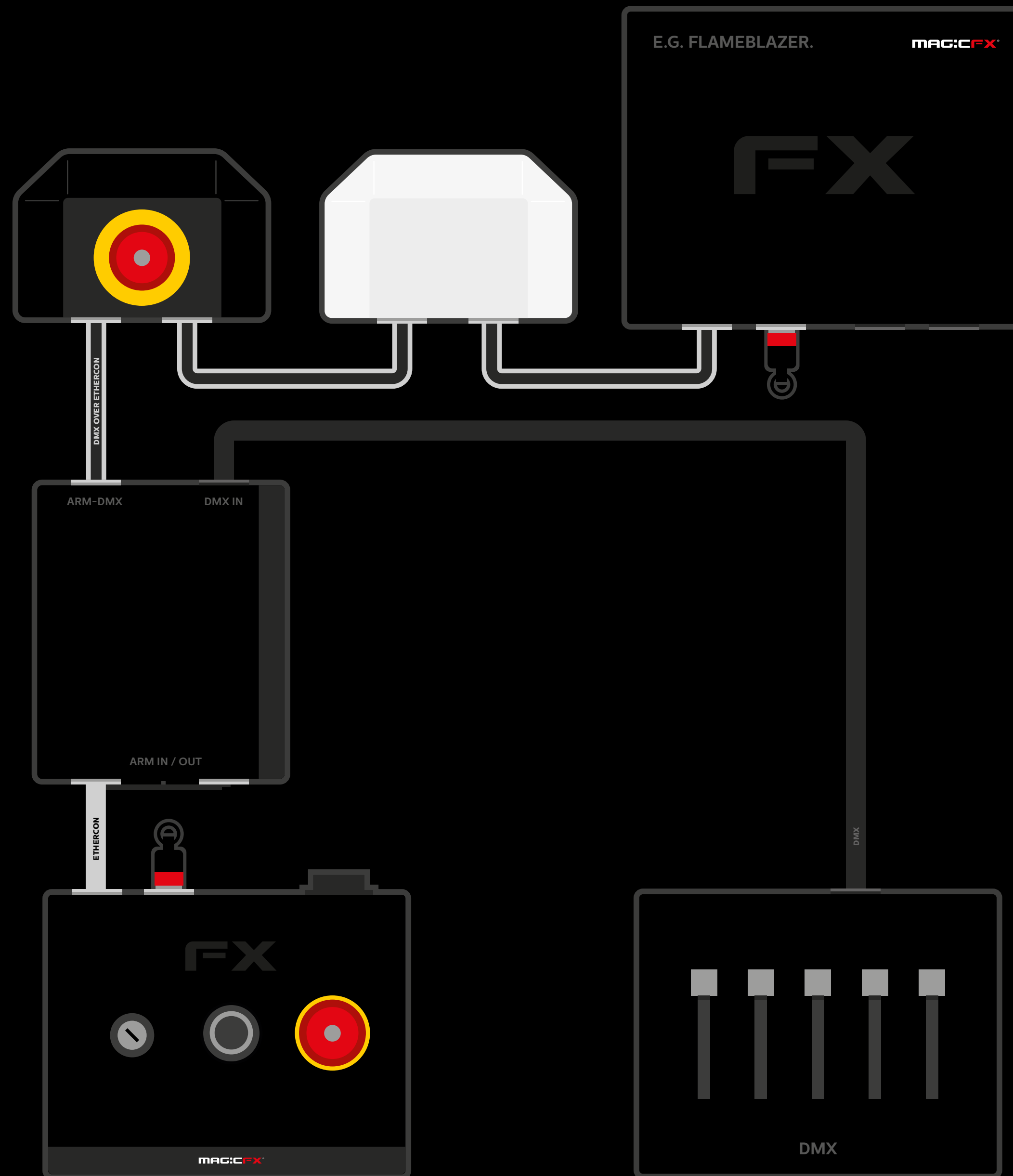




3.

# SETUP THREE.

DMX desk is connected to a combiner box as well as the ARM CONTROLLER. One outgoing cable goes out to an optional inline E-STOP and BEACON and to the high risk sfx machines.

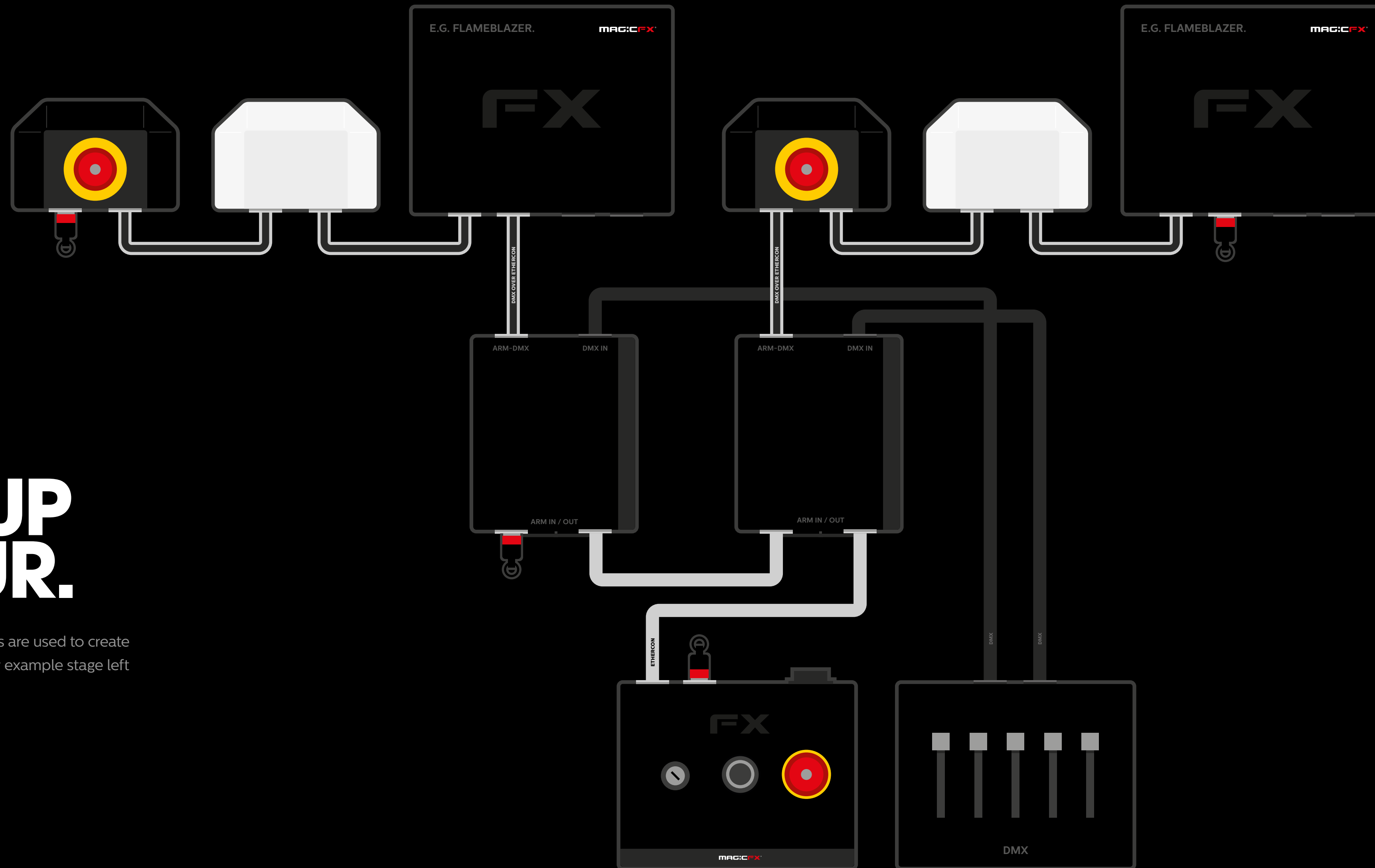




# 4.

## SETUP FOUR.

Two combiner boxes are used to create two output lines, for example stage left and stage right.

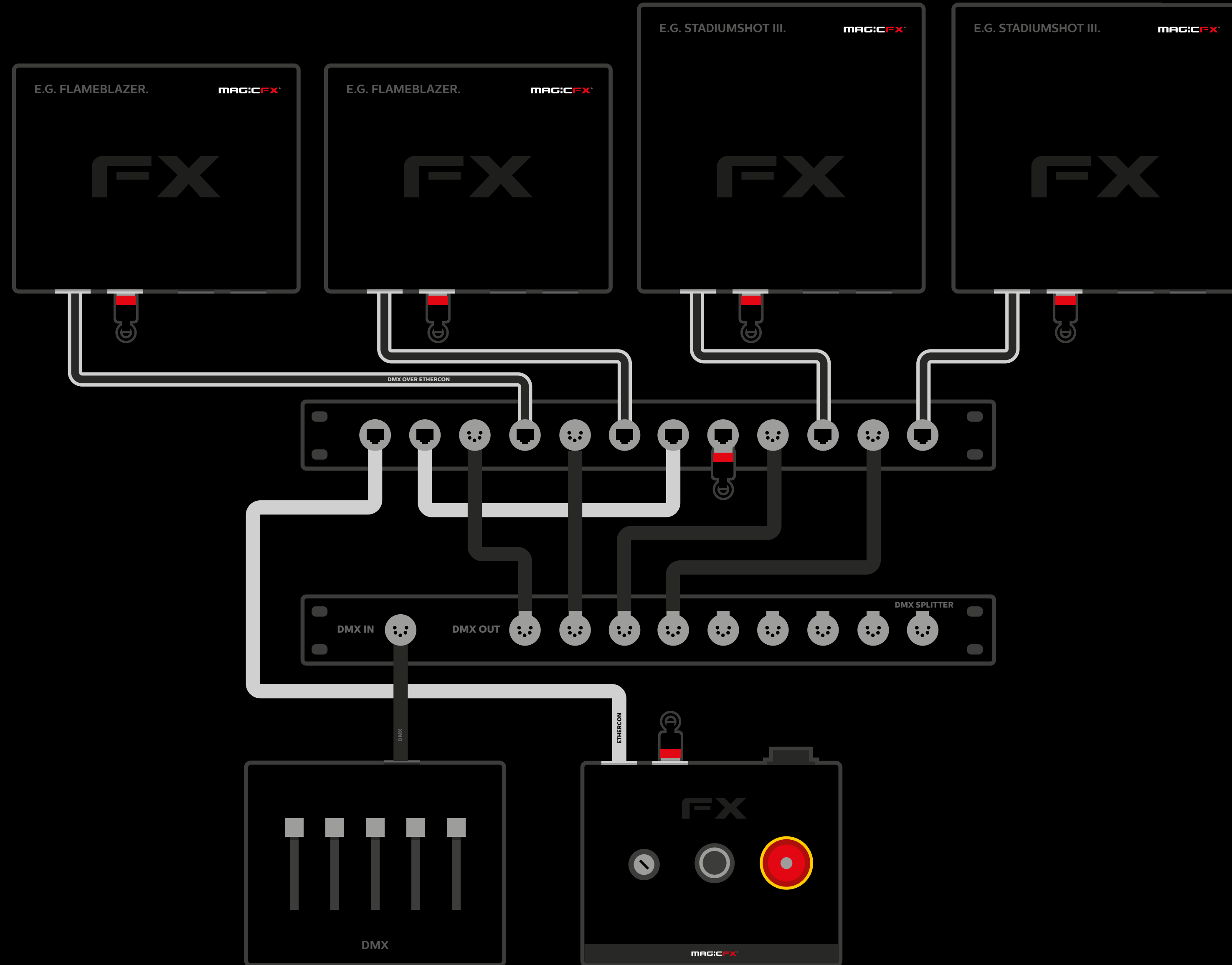




5.

# SETUP FIVE.

A 19" combiner rack is used in combination with a DMX splitter to split the lines and create a star network.

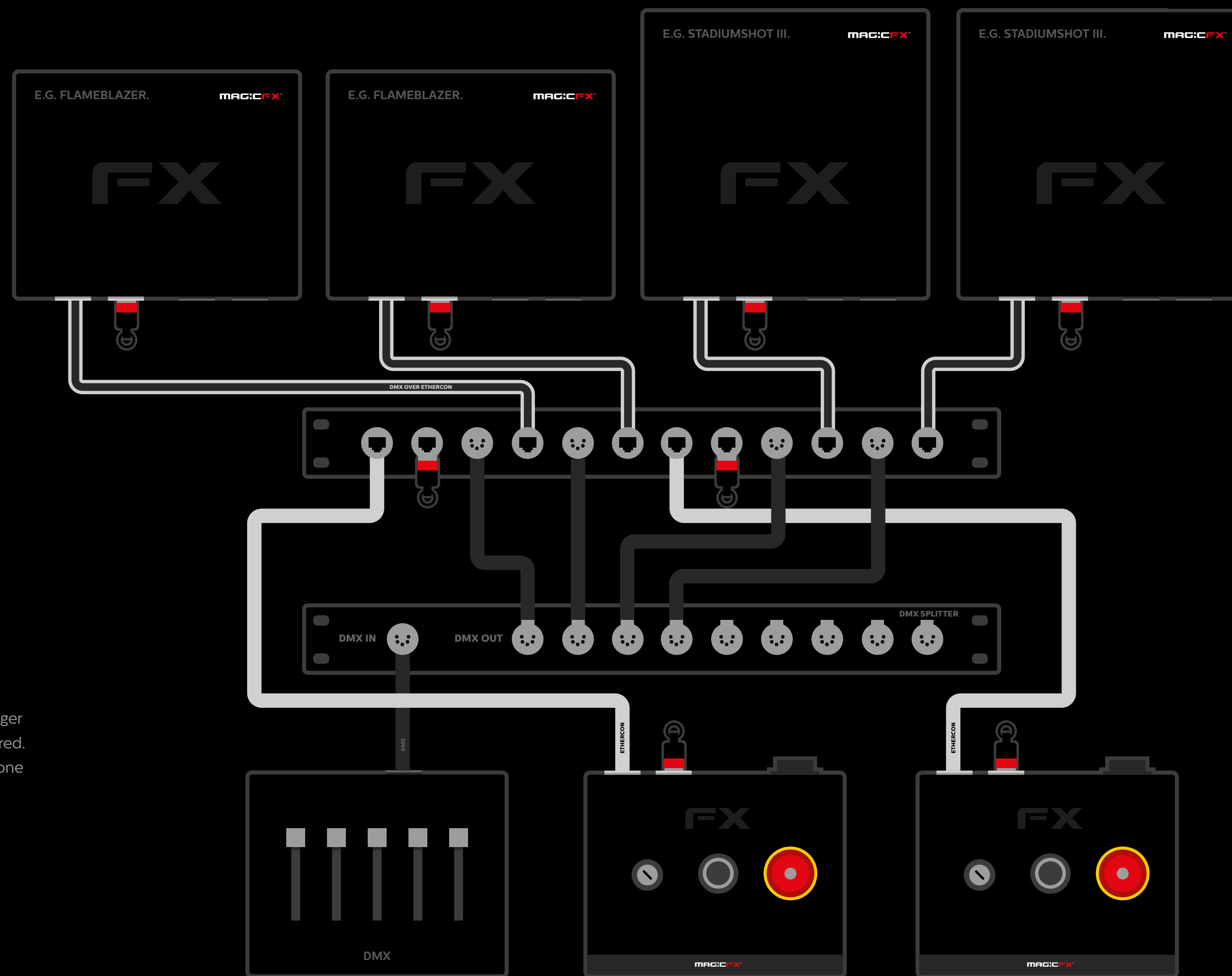




6.

# SETUP SIX.

An extra ARM CONTROLLER is connected. A bigger setup to control different sfx separately if preferred. For example one arm controller for flames and one for stadium shots.





# FUTURE PROOF.

The SFX SAFETY ARM SYSTEM is an innovative solution based on safety. It now works with the MAGICFX FLAMEBLAZER, LIQUID FLAME SYSTEM and STADIUMSHOT III.

In the near future we will release a STAGEFLAME II and a FLAMEBLAZER 5WAY (5 nozzles) as well. And we will soon release a 19" SWITCH RACK that works with the safety arm system to control older and other machines that are powered by 220v as well.

## COMING SOON



STAGEFLAME II



SFX ARM SWITCHRACK 19"



FLAMEBLAZER 5WAY





# NO TURNING BACK.

The new SFX SAFETY ARM SYSTEM sets the new standard and is definitely a must have safety system for every sfx company and an obligation for any event where flames or stadium shots are used. Safety for artists, crew and crowd.





The logo for MAG:CFX is centered on a black background. The word "MAG:" is in white, "CFX" is in red, and a registered trademark symbol (®) is at the end. The background features two diagonal panels showing a party scene with confetti and colorful lighting.

MAG:CFX®